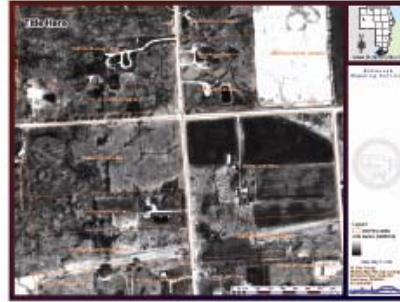


SAMPLES
Enhanced Mapping Services



\$30.00

11 x 17 map with roads, parcels and aerial



\$15.00

8.5 x 11 map with aerial and parcels



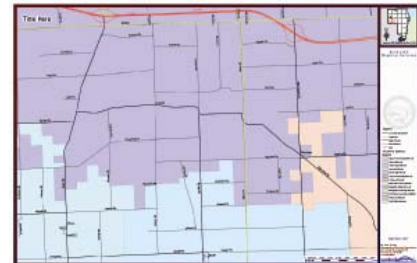
\$25.00

11 x 17 map with roads and voter precincts



\$20.00

8.5 x 11 map with roads, parcels and floodplain



\$25.00

11 x 17 map with roads and school districts



St. Clair County Administration Office Building
200 Grand River Avenue
Port Huron, Michigan 48060
www.stclaircounty.org

ST. CLAIR COUNTY
MAPPING
SERVICES



St. Clair County
Mapping Services
Land Management Suite
1st Floor
200 Grand River Avenue
810/989-6930

St. Clair County Mapping Services

ST. CLAIR COUNTY MAPPING SERVICES

St. Clair County has created a unique website that allows Internet users to create tailored maps right from their home. The on-line mapping site serves up parcel boundaries, aerial photography, wetlands and floodplain data, as well as voting precinct and school information. The web address is: <http://gis.stclaircounty.org/county>.

If you need further mapping assistance, for a fee, there are three different levels of mapping services to meet your needs. All services should begin at the Land Management Suite located on the first floor of the County Administration Building, 200 Grand River Avenue in Port Huron.

PRIMARY SERVICES (WHILE YOU WAIT)

Visit the Land Management Suite for basic mapping needs. (hours 8 – 4:30).

ENHANCED SERVICES (IN 5 BUSINESS DAYS OR LESS)

Presentation quality mapping available in three sizes.

CUSTOM SERVICES (IN 10 BUSINESS DAYS OR LESS)

A GIS professional will create a tailored map document for your needs.

**ALL REQUESTS MUST BEGIN IN
THE LAND MANAGEMENT SUITE**

PRICE LIST

PRIMARY SERVICES

Available at the Land Management Suite, 1st Floor, County Administration Building.

ON-LINE MAPPING (performed by staff while you wait).

Roads, aerial photos, parcel lines, wetlands, floodplain, voter precinct, school districts.

8.5 x 11 \$ 5.00

SECTION/PARCEL MAP (Predefined)

One section with roads and parcel lines.

8.5 x 11 \$ 5.00

11 x 17 \$ 5.00

18 x 24 \$ 8.00

24 x 36 \$12.00

34 x 44 \$15.00

ORIGINAL PLATS

18 X 24 \$ 2.00

11 x 17 \$ 2.00

St. Clair County Mapping Services
Land Management Suite
200 Grand River Avenue
810/989-6930
Fax: 810/985-4297

ENHANCED SERVICES

These must be ordered through the Land Management Suite, 1st Floor, County Administration Building

LAYER CHOICES INCLUDE:

Aerial photography (Year 2005 or 1937), wetlands, floodplain, voter precinct, school districts, roads or parcel lines.

The prices listed below include two layers from the above list. Each additional layer is \$5.00.

Size	Price	Extra Copies
8.5 x 11	\$15.00	\$ 2.00
11 x 17	\$25.00	\$ 3.00
34 x 44	\$40.00	\$10.00

HISTORICAL SEARCH (aerial photography archives)

Paper format only: 1962, 1973, and 1980
\$60.00 per hour with 1-hour minimum,

Digital format: 1985, 1990, 1995, and 2000
\$30.00 per half hour with ½-hour minimum, for 1 digital photocopy,

Additional copies for any historical aerials – same price as above extra copies.

CUSTOM SERVICES

\$80.00 for the first hour (one hour minimum) and \$40.00 for each additional ½ hour or portion thereof. Order through the Land Management Suite.

DIGITAL DATA FILES

\$1/megabyte for raster data, and
\$10/megabyte for vector data

Rush fees do apply in certain cases.